



2025

**Community
Impact
Report**

**160th Anniversary &
70 Years of Teaching
in 2026!**



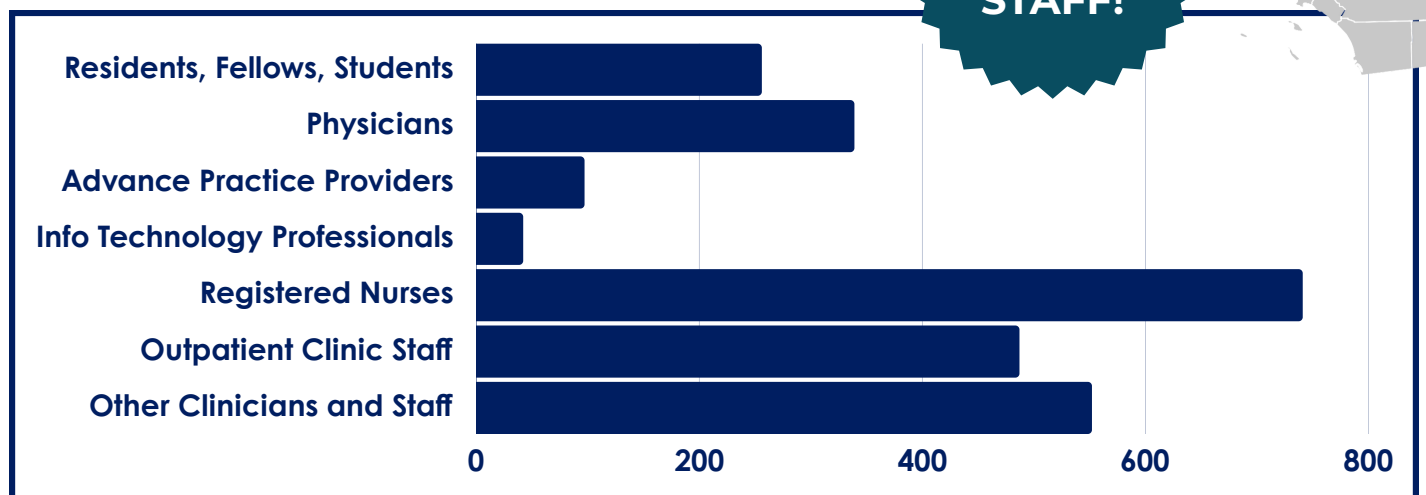
WHY WE EXIST

Kern Medical's hospital and clinics, like the other 17 designated safety net health systems located in California, have a foundational role that underpins the delivery of healthcare in our state and local communities.

- Trauma and Specialty Services
- Acute Behavioral Health
- Major Teaching Hospital
- Care for the Most Vulnerable



**OVER
2,500
STAFF!**



Kern Medical is the longest-operating academic teaching hospital in the region, serving as a cornerstone of healthcare and education in Kern County. Each year, we train more than 250 medical students, residents, and fellows while employing over 2,500 dedicated staff.

With 12 clinic locations throughout the county, Kern Medical provides accessible, comprehensive care to our community. Our key services include a Level II trauma center, behavioral health, women's health, primary care, and a wide range of specialty programs. Through clinical care, education, and innovation, Kern Medical continues to advance the health and well-being of the communities we serve.

ABOUT KERN MEDICAL

A little over 10 years ago, Kern Medical was on the brink of collapse. The hospital was losing \$3 million a month and owed more than \$100 million in debt. I am proud to have served as one of the leaders who helped save the hospital. As part of the turnaround, the County of Kern transferred the hospital and clinics to the newly formed Kern County Hospital Authority to sustain its vital mission, which includes operating the area's teaching hospital, trauma center, and acute behavioral health services while caring for the most vulnerable.

As part of our mission, Kern Medical has operated physician teaching programs for almost 70 years. Over time, the education programs expanded to include training for nurses and other healthcare professionals. These programs are critical to attracting clinicians to our community. The medical education program has been affiliated with the David Geffen School of Medicine at UCLA since 1982, with many of Kern Medical's physicians holding faculty appointments at that institution. We recently entered into affiliations with USC and Western University of Health Sciences, allowing their medical school students to undergo training here as well. Our relationship with Western University has a particular focus on establishing a pathway for Central Valley students to complete medical school and return to practice in our local community.

The staff and physicians' dedication to training the next generation of clinicians carries over to the services in our trauma center, clinical services, and behavioral health. Additionally, this past decade has seen tremendous growth through expanded teaching programs and clinical services:

- Opened nine new clinic locations, bringing our total to 12 different clinic locations to increase access to care. We treated over 250,000 patients at our outpatient clinics last year.
- Remodeled extensive parts of the hospital and existing clinics to enhance and expand services, including pediatrics, emergency department, women's and children's services, radiology department, simulation center, and a medical education building.
- Invested in major technology such as the DaVinci Xi for robotic surgery, an O-arm for neurosurgical navigation, imaging equipment including two CTs and an MRI, as well as information systems.
- Recruited over 150 physicians across a variety of specialties.
- Partnered with medical schools and universities to expand training and education for healthcare professionals, including medical students, physicians, nurses, social workers, therapists, nurse practitioners, physician assistants, radiology techs, respiratory therapists, and more. Over 250 medical students, residents, and fellows undergo training each year at Kern Medical.

Over 2,500 physicians and staff serve at Kern Medical. Their commitment makes it an amazing place to teach, train, and most especially, to care for everyone.

All the best,

Scott Thygerson
Chief Executive Officer

KERN COUNTY HOSPITAL AUTHORITY

Board of Governors



Phil McLaughlin
Chair,
Retired Banking Executive



Amir Berjis, MD
Thoracic Surgeon & Designated
Institutional Official
Kern Medical



Nancy Anderson
County Administrative Officer,
County of Kern



Eric Merz
Business Consultant



Cindy Pollard
Community Leader



Stephen Pelz
Executive Director
Housing Authority of Kern



Tina Stout
Attorney at Law

EXECUTIVE TEAM

Scott Thygeron - Chief Executive Officer

Andy Cantu - Chief Financial Officer

Glenn Goldis, MD, MMM - Chief Medical Officer

Tyler Whitezell - Chief Operating Officer

Tonya Barraza, RN - Chief Nursing Officer

Renee Villanueva - Chief Ambulatory and Outreach Officer

Roby Hunt - Chief Transformation Officer

Karen Barnes - Vice President & General Counsel

Natalee Garrett - Vice President of Strategic Development

Sandra Bakich - Interim Co-Chief Information Officer

Ezzat Khalil - Interim Co-Chief Information Officer

MEDICAL EXECUTIVE COMMITTEE

Sabitha Eppanapally, MD

Medical Staff President

Warren Wisnoff, DO

Medical Staff President Elect

Rick McPheeters, DO

Medical Staff Past President
Chair, Department of Emergency
Medicine

Arman Froush, DO

Chair, Department of Radiology

Ralph Garcia-Pacheco, MD

Chair, Department of Medicine

Juan Lopez, MD

Chair, Department of Obstetrics &
Gynecology

Mohammed Molla, MD

Chair, Department of Psychiatry

Jeffrey Nalesnik, MD

Chair, Department of Surgery

Thiagarajan Nandhagopal, MD

Chief, Division of Pediatrics
Acting Chair, Department of Family
Medicine

Gian Yakoub, DO

Chair, Department of Pathology

Chou Yang, MD

Chair, Department of
Anesthesiology

Amber Jones, DO

Member at Large

Aslan GhandForoush, DO

Chair, Peer Review Committee
Member at Large

FISCAL YEAR 2025

BY THE NUMBERS



2,500+

Employees



41

Primary Care and
Specialty Clinics
across 12 Locations



250,103

Outpatient
Clinic Visits



2,604

Births



2,402

Trauma
Activations



6,356

Surgeries



10,184

Inpatient
Admissions



54,971

Emergency Visits

2025

Fiscal Year

Where our income came from:

OPERATING REVENUES

Net Patient Service Revenue and Patient Care Funding	\$522,642,762
County Indigent Funding	3,422,529
Other Operating Revenue	71,852,115

Total Operating Revenue	\$597,917,406
--------------------------------	----------------------

67% of our funding comes from Medicaid programs.

Where it went:

OPERATING EXPENSES

Salaries and Employee Benefits	402,778,140
Services and Supplies	150,157,934
Other Expenses	25,602,622
Depreciation and Amortization	15,570,537

Total Operating Expenses	\$594,109,233
---------------------------------	----------------------

Operating Gain	\$3,808,173
-----------------------	--------------------



Training of Health Care

MEDICAL EDUCATION

For nearly 70 years, Kern Medical has led the way in physician education, partnering with top medical schools to train the next generation of doctors. Through our affiliation with Western University of Health Sciences (College of Osteopathic Medicine of the Pacific), third and fourth-year medical students complete their core clinical rotations at Kern Medical. We also welcome rotating students from the David Geffen School of Medicine at UCLA and the Keck School of Medicine at USC, further expanding our teaching mission and reinforcing our role as a vital academic medical center.

PATHWAYS TO PRACTICE

Western University of Health Sciences (WesternU), a large graduate school for healthcare professions, and Kern Medical, a community institution with more than six decades of training healthcare professionals, are partnering to strengthen the pathway for growing new physicians and healthcare providers in the Central Valley. WesternU's focus on patient-centered care, servant leadership, and innovative education aligns with Kern Medical's mission, creating opportunities for students from Bakersfield College and California State University, Bakersfield to pursue medical education at WesternU and return for clinical training, residency, and fellowship programs at Kern Medical.



Scan the QR code to visit Western University of Health Sciences Website for more information.



2025 Incoming Class of Residents and Fellows

Students at Bakersfield College and CSUB, receive mentorship and guidance to prepare for medical education training.

Qualified students can then transition to Western University medical training programs, with the opportunity to complete 3rd year medical school clinical rotations at Kern Medical.

Upon graduation, these students return to Kern Medical for residency and fellowship training, where many ultimately choose to stay and serve as practicing physicians.

This initiative builds a pathway for homegrown physicians, ensuring that more of the Valley's brightest students remain here to serve their community.

the next Generation HEROES

Kern Medical continues to strengthen its affiliation with the David Geffen School of Medicine at UCLA for its existing residencies and fellowships. Since 1982, our graduate medical education programs have been affiliated with UCLA, reflecting a long-standing commitment to academic excellence. Kern Medical is dedicated to building a more robust, meaningful, and integrated affiliation between our sponsored programs and those of UCLA as a way to attract both future faculty and residents. The Central Valley remains a medically underserved area in urgent need of additional primary care and specialty physicians. In line with our partnership with UCLA, our collaboration with Western University will open new avenues for those pursuing a career in medicine.

OVER 250 MEDICAL STUDENTS, RESIDENTS, & FELLOWS



NURSING & ALLIED HEALTH

Kern Medical's partnership with both Bakersfield College (BC) Department of Nursing and the California State University, Bakersfield (CSUB) Nursing program is designed to strengthen nursing and allied health workforce development by combining our community's educational excellence with the clinical expertise of Kern Medical's healthcare professionals.

KEY INITIATIVES

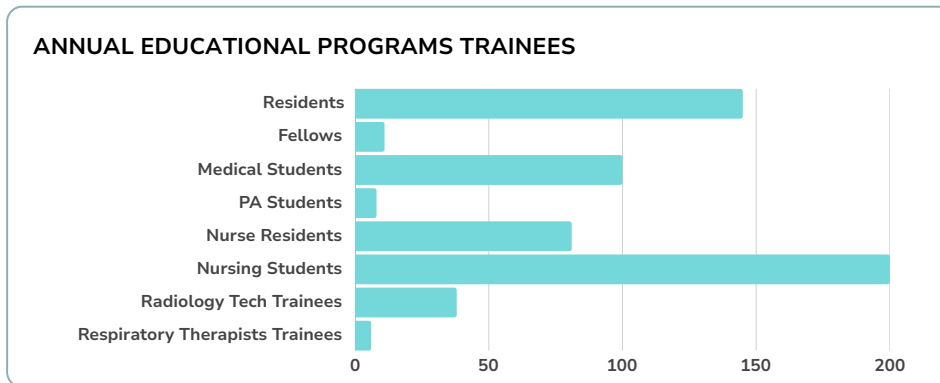
- **Increasing Capacity:** By expanding clinical opportunities for BC and CSUB students, the program enables the college to enroll and graduate more nurses and allied health professionals.
- **Community Health:** These initiatives aim to improve access to healthcare by ensuring a sufficient number of well-prepared clinicians are available to serve the community, particularly in rural and underserved areas.

EDUCATIONAL PATHWAYS

- **Registered Nursing (RN):** Bakersfield College offers pathways to becoming a Registered Nurse through its Associate Degree in Nursing (ADN) program, while CSUB provides the option to pursue a Bachelor of Science in Nursing (BSN).
- **LVN to RN:** Licensed Vocational Nurses (LVNs) can pursue the LVN-to-RN Associate Degree program, providing an opportunity to advance their careers and expand their scope of practice.
- **Nurse Assistant Training:** The Nurse Assistant Training Program equips students with essential entry-level patient care skills, preparing them for immediate roles in healthcare settings.
- **Nurse Practitioners:** Nurse Practitioners (NP) receive advanced training through post-graduate residency and fellowship programs, offering specialized clinical experience that prepares NPs to practice independently, expand their scope of care, and meet the growing healthcare needs of the community.

From Learners to Leaders in Medicine

Demonstrating a direct path to professional healthcare careers



- **Junior Volunteer Program** provides students with meaningful exposure to the healthcare field, while instilling a spirit of service and responsibility.

\$17,000 awarded in scholarships in 2025 junior volunteers!

- **Radiology Tech Trainee Program** provides a direct pathway from education to licensed clinical practice. In addition to the number of radiology tech students at Kern Medical, we offer 4 trainee positions, and once licensed, trainees typically transition into permanent Radiology Tech roles within 9 months.
- **East High School Healthcare Academy** allows students to observe real-time clinical work while serving in controlled environments that build confidence and skill. The program secured state grant funding to expand into a formal academy model, with transportation provided to ensure equitable access.

Radiology trainees move into licensed Radiology Tech roles within 9 months!

5 Research Assistant students are preparing to apply for medical school this year!

2 Simulation Research Assistant students were accepted into medical school in 2024!

“Wow, I never thought I would be able to see this at my age,” says a junior volunteer after shadowing in Kern Medical’s Emergency Department. She continued, “I feel like after seeing those experiences and being able to see that in real life and not over a TV show, I think it made me want to get into it.”

- East High School Student Volunteer



RESEARCH

► **Research Assistant Programs** give college students hands-on exposure to clinical research while working directly with physicians. With approximately **60 research assistants across 5 specialties**, these programs prepare students for careers in healthcare through mentorship, shadowing, and active research participation.

More than 60 Research Assistants:



Emergency
Medicine
(EMRAP)



Surgery,
Trauma, & ACS
(STAR)



Valley Fever
Institute



Simulation



Epilepsy

VALLEY FEVER INSTITUTE

The Valley Fever Institute at Kern Medical drives research to improve the diagnosis, treatment, and prevention of Valley Fever. Alongside NIH- and industry-funded studies, the Institute investigates why some patients have mild illness while others develop severe disease, explores genetic and immunological risk factors, and works to develop safer treatments, targeted therapies, and ultimately a vaccine. With decades of experience, access to the largest Valley Fever patient population, and a state-of-the-art facility, the Institute is uniquely positioned to advance discovery and transform care.



SOUTHERN SAN JOAQUIN VALLEY RESEARCH FORUM

The annual Southern San Joaquin Valley Research Forum, presented by Kern Medical, showcases research, scholarship, and innovation across the region. The Forum provides a platform for students, residents, faculty, and community partners to share work through abstracts, presentations, and posters on topics ranging from basic science to quality improvement.

By fostering collaboration and highlighting discovery, the event strengthens the culture of inquiry in the Central Valley, inspires future physician-scientists, and affirms Kern Medical's commitment to advancing knowledge, improving outcomes, and shaping the future of medicine.



Scan QR Code to explore over 100 case studies and submissions from the 2025 Research Forum



OUR PATHWAY



Received Primary Stroke designation, including the launch of a telemedicine stroke and neurological-interventional radiology services

Safe Sleep program to prevent Sudden Unexplained Infant Death Syndrome

New physician offices located at 9300 Stockdale Highway

July 1, 2016 - transfer of ownership and operations of Kern Medical to the Hospital Authority

Implemented advanced urologic services program

Contracted with USC Neurosurgeons

Developed new minimally invasive robotic surgery program, including the da Vinci Xi robotic surgical system



Remodel and expansion of a Family Medicine clinic at Columbus Street Clinic

2C Inpatient Medical/Surgical Unit remodeled

Opening of Kern Medical Surgery Center, LLC

Remodel and relocation of physician resident rounding rooms



New hospital administration starts at Kern Medical

Dedicated Hand Clinic

Newly remodeled endovascular interventional radiology lab

Reach and Grow Clinics for medically fragile and behavioral health patients needing outpatient medical care in the remodeled hospital campus clinic

Opened Wound Care Clinic



2014

2015

2016

2017

2018

2019



Expanded Truxtun Clinic location space and services

Remodel of several hospital departments, including the Emergency Department, Lecture Hall, A-Wing Clinic, waiting areas for ICU/DOU, Surgery, and OB/GYN

Replacement of most major imaging equipment including CT, digital mammography, and x-ray unit in the Emergency Department

Expanded Birth Center's post-partum services with private rooms

Valley Fever Institute founded

JJ's Legacy Comfort Room opened

Relocation and opening of Oncology Infusion Center of Columbus Street Clinic

Development of Simulation Lab for training of medical students, residents, and nurses

Relocation of Reach and Grow Clinics to new 34th Street Clinic to expand care

Safe Home Safe Baby program in conjunction with Bakersfield Firefighters Burn Foundation

Nitrous Oxide Pain Management Program launched for mothers in labor

Labor and Delivery Unit remodeled

Medical Student Union Building opened

Launched Epilepsy Program with USC Epilepsy Consortium

Celebrated 67 years of physician residency training programs

Eye Institute opened

Installation of Cerner electronic health record and revenue cycle system

Q Street Clinic Opening with expanded specialty services including Fresh Fracture Clinic, orthopedics, cardiology, general surgery, neurosurgery, and pain management



TO SUCCESS...

Valley Fever Institute and Infusion Services expansion and relocation to Columbus Street Clinic

Operationalized mobile isolation trailers for discharged patients with insecure housing - available for all hospitals in the Bakersfield area

COVID-19 Pandemic

Launched mobile COVID-19 vaccine clinics

Operate the State's exclusive Bakersfield COVID monoclonal antibody treatment center at Columbus Street Clinic

Medical clinic opening at City of Bakersfield's Low Barrier Shelter for homeless patients

Affiliation with Western University of Health Sciences to train 3rd and 4th year medical students

Increased Internal Medicine and Psychiatry physician residency slots

Expanded ENT, Head and Neck, and Plastic/Reconstructive surgery programs at new downtown location



Stockdale Pediatric Clinic Expansion

Kern Medical receives accreditation for 3 new residency and fellowship programs: General Surgery, Addiction Medicine, and Simulation Medicine



Unveiled 2 New State of the Art Mobile Medical Offices

Emergency Department Remodel

2020

2021

2022

2023

2024

2025



Hospital cafeteria remodel

Launch Sickle Cell Program and Clinic

Commence Infectious Disease Fellowship for graduate medical education training

Launched the Behavioral Health Electroconvulsive Treatment Therapy program and clinic

Opened the Q Street Imaging Center with a specialty focus on Women's Health

End of COVID-19 Pandemic

Opening of new inpatient pediatric unit

Remodel of outpatient pediatric clinic at Columbus Street

Opening of Recuperative Care Center at City of Bakersfield's low barrier shelter for homeless patients discharged from area hospitals

Launched Kern Medical Teaching Kitchen

Opening of Addiction Medicine Clinic at the hospital campus



COMMUNITY

Education & Outreach

Kern Medical is committed to meeting community members where they live to provide care, education, and resources beyond its hospital walls. Through mobile health services, specialty programs, and community partnerships, we continue to expand access and build healthier futures across Kern County.



The Valley Fever Institute continues to be a leader in patient support, education, and research. The Institute hosts monthly support groups, organizes statewide and national awareness efforts, and shares groundbreaking research at professional forums. Throughout the year, the team has worked closely with media outlets, local leaders, and community partners to raise awareness through public proclamations, community walks, and educational campaigns.





Our **Trauma Center** provides essential services like Stop the Bleed, Roadway Safety, and more. These programs address urgent needs such as bleeding control, accident prevention, and gang violence mitigation. In total, the Trauma Center conducted 56 outreach events at multiple community sites, engaging directly with schools, civic groups, and families as part of its trauma accreditation standards.

Kern Medical's **Oncology Services** play a significant role in community education, particularly during Breast Cancer Awareness Month. The oncology service has been accredited by the American College of Surgeons Commission on Cancer for over 40 years. Its team has partnered with local organizations to host awareness walks, coordinate joint media events, and support survivors and their families through prevention, education, and early detection initiatives.

Kern Medical's **Safe Sleep Program** has helped new parents by distributing safe sleep kits and offering critical education on evidence-based practices to reduce infant mortality and promote healthy child development.

The Teaching Kitchen has brought health education to life by providing hands on cooking demonstrations and nutrition lessons at back to school nights and wellness events. Individuals and families have been able to walk away with practical skills and resources to help improve their diets and overall well being.

MOBILE CLINIC SERVICES

Kern Medical is cultivating meaningful connections with schools and organizations throughout Kern County to expand access to healthcare for students, staff, and the community.

In the past year, Kern Medical hosted more than 160 mobile clinic events in partnership with four area school districts and 23 community organizations. These events offered a wide range of services, including vaccinations, physicals, health screenings, and preventive care, and took place everywhere from neighborhood resource fairs to school-based clinics.

What we offer

- Primary Care
- Wellness Visits
- Hearing Tests
- Vision Screenings
- School Physicals
- Point of Care Testing
- Lab Services (Blood Draws)
- Immunizations
- Health Benefit Advisors
- Same-day visits



Community Partners

- Kern Health Systems
- Bakersfield City School District
- Bakersfield College
- County of Kern
- Bakersfield Police Department
- Black Family Wellness Expo
- Brundage Lane Navigation Center
- California Farm Workers
- City of Bakersfield
- Dolores Huerta Foundation
- East High School
- Fairfax School District
- Greenfield School District
- Guelaguetza Vaccine Event
- Healthful Harvest
- Historic Union Cemetery
- Hope on Heart/Tiny Homes
- Love Your Park Community Health and Wellness
- Maricopa School District
- Police Activities League
- Redwood Elementary
- Shafter High School
- Victory Family Services
- Vineland School District
- Wasco High School

Our mobile clinic services are supported by:



**Kern Family
Health Care.**

Health for Life



Health for Life is a monthly podcast hosted by Kern Medical's marketing team that dives deep into the health topics that matter most to you and your family. Each episode features conversations with expert physicians, covering a wide range of topics from Valley Fever and Endometriosis to Bariatric Surgery, Addiction Medicine, and more. Health for Life delivers expert insight with a local touch. Because your health is more than a moment - **it's for life.**

Check out some of our episodes!



Addiction Medicine

Dr. Sarah Gonzalez, an emergency medicine physician specializing in addiction treatment, joins us to explore the science of addiction, share stories of recovery, and discuss how we can break the stigma surrounding it.



Valley Fever

Infectious disease specialist Dr. Royce Johnson breaks down Valley Fever, its symptoms, treatment, history, latest research, and what the community should know about prevention and early detection.



Colorectal Health

Dr. Alex Elias, Kern County's only board-certified female colorectal surgeon, discusses screenings, clears up misconceptions, tackles stigma, and explains how to stay proactive as colorectal cancer rates rise.



Endometriosis

Dr. Soorena Fatehchehr joins us to share insight on endometriosis, its real symptoms, common misconceptions, the impact of medical gaslighting, and the treatment options available.



The Path to Becoming a Physician

Dr. Amir Berjis discusses the pathway to becoming a physician, from early inspiration to residency and beyond, while highlighting the unique opportunities at Kern Medical that are shaping the next generation of doctors in the Central Valley.



Apple

LISTEN NOW

NEW EPISODES EVERY MONTH



Spotify

Scan here or listen wherever you get your podcasts!

What We Do

Kern Medical Foundation proudly partners with our community and government agencies to secure funds and resources necessary to support Kern Medical's life-changing and life-saving programs. By raising additional financial support, the Foundation has secured funds for patient services, facilities, equipment, medical education and research.

Who We Are

Kern Medical Foundation operates as a not-for-profit corporation under section 501(c)(3) of the Internal Revenue Code. Contributions qualify for tax deductions under state and federal regulations.

Our Impact



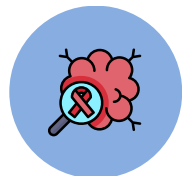
Pediatric
Emergency
Room



Medical
Education



Outpatient
pediatric
patient
programs



Oncology
Navigation



Valley
Fever
Institute



Support for
Sickle Cell
patients



Oncology
& Infusion
services



Medication
Assistance
and
Recovery
Clinic



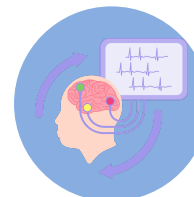
Social
Services



Labor &
Delivery
fetal
monitoring



Palliative
Care



Cardiopulmonary
services (EEG)



Simulation
Center



Physician
Training

Doc FOR A DAY



Doc for a Day is a unique program hosted by the Kern Medical Foundation that invites community leaders to step into the world of healthcare on the Kern Medical campus. Through this immersive experience participants gain firsthand insight into the hospital's many programs, teaching services, and specialties, highlighting the skill, compassion, and dedication behind every patient interaction. Activities may include shadowing physicians, nurses, and other healthcare professionals; observing patient care; and touring hospital departments. Whether witnessing life-saving procedures or exploring the inner workings of hospital operations, Doc for a Day offers an unforgettable look at what it truly means to serve on the front lines of medicine.



Morgan Clayton

President and Founder, Tel-Tec Security Systems Inc.

Pat Campbell

Philanthropist & Community Leader



President Vernon Harper, Ph.D., President of CSUB

Ashleigh Herrera, Ph.D., LCSW, Psychology Professor

Erika Harper, Ph.D., Program Director, Counseling Psychology



Robert Price

Reporter, KGET





CHECK IT OUT

Scan this QR code to view our recent commercial highlighting Kern Medical's incredible turnaround.



Featuring our very own physicians, nurses, staff and patients.

 **KernMedical** | *Health for Life.*



661-326-2000



kernmedical.com