



2024

**Community
Impact
Report**



TABLE OF CONTENTS

2.

About Kern
Medical

3.

Board of
Governors

4.

Executive Team
and Medical
Executive
Committee

5. & 6.

Training the
Next Generation
of Physicians

7.

Medical
Education

8.

By The
Numbers

9. & 10.

How Far
We've Come

11.

Financial Report

12.

Staff
Appreciation

13. & 14.

Recent
Updates

15.

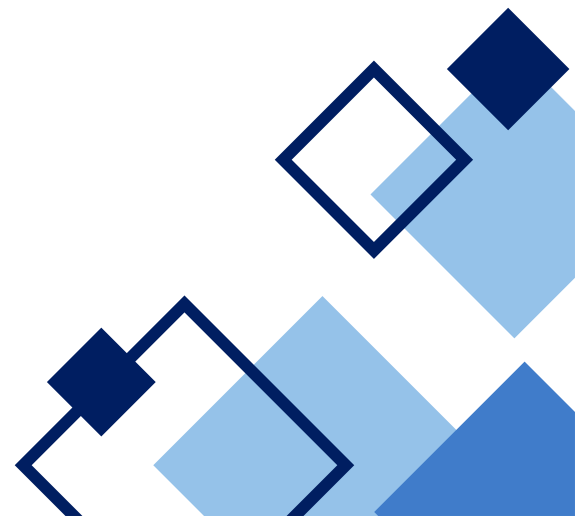
Mobile Clinic
Services

16.

Pediatric
Emergency
Department

17.

Kern Medical
Foundation



ABOUT KERN MEDICAL

Ten years ago, Kern Medical was on the brink of collapse, the hospital was losing \$3 million per month and was more than \$100 million in debt. To protect vital local healthcare services, the independent Kern County Healthcare Authority was established, and hired a team of healthcare experts. I'm proud to be part of the leadership that helped turn the hospital around and it is now financially stable, has improved staffing levels and training, and is repairing, upgrading, and expanding healthcare facilities to provide quality care for our most vulnerable residents.

Kern Medical is a teaching hospital affiliated with the UCLA medical school, and is critical to training and attracting doctors, nurses and other essential healthcare workers to our community. This relationship with UCLA is vital to staffing our local hospitals and community health clinics to make sure Kern County residents have access to quality healthcare.

Kern Medical is also the only hospital with a Level Two Trauma Center between Los Angeles and Fresno intended to treat patients with catastrophic injuries threatening life and limb. Its Behavioral Health Unit is the area's primary facility to treat people experiencing a mental health crisis, and the outpatient surgery center and ten community clinics make healthcare more accessible and affordable to residents.

Among its many accomplishments this past decade, Kern Medical:

- Opened seven new community health clinics to make healthcare more accessible and affordable to residents;
- Upgraded the emergency room, invested in new medical equipment and technology, improved the birth center and expanding access to specialties to treat cancer, strokes and heart disease;
- Partnered with medical schools and universities to provide training and education for medical students, doctors, nurses, social workers and other healthcare professionals who work and live in Kern County.

Over 2,400 physicians and staff serve at Kern Medical to fulfill our role as our community's teaching hospital, trauma and specialty center, and to care for all, especially the most vulnerable.

For more information, please visit our website at kernmedical.com.

All the best,

Scott Thygerson
Chief Executive Officer

KERN COUNTY HOSPITAL AUTHORITY

Board of Governors



Phil McLaughlin
Chair,
Retired Banking Executive



Amir Berjis, MD
Thoracic Surgeon & Designated
Institutional Official
Kern Medical



Nancy Anderson
County Administrative Officer,
County of Kern



Eric Merz
Business Consultant



Cindy Pollard
Community Leader



Stephen Pelz
Executive Director
Housing Authority of Kern

EXECUTIVE TEAM

Scott Thygerson - Chief Executive Officer

Andy Cantu - Chief Financial Officer

Glenn Goldis, MD, MMM - Chief Medical Officer

Tyler Whitezell - Chief Operating Officer

Tonya Barraza, RN - Chief Nursing Officer

Renee Villanueva - Chief Ambulatory and Outreach Officer

Roby Hunt - Chief Transformation Officer

Karen Barnes - Vice President & General Counsel

Natalee Garrett - Vice President of Strategic Development

Lisa Hockersmith - Vice President, Human Resources

Sandra Bakich - Interim Co-Chief Information Officer

Ezzat Khalil - Interim Co-Chief Information Officer

MEDICAL EXECUTIVE COMMITTEE

Sabitha Eppanapally, MD

Medical Staff President

Warren Wisnoff, DO

Medical Staff President Elect

Rick McPheeters, DO

Medical Staff Past President
Chair, Department of
Emergency Medicine

Amber Jones, DO

Member at Large

Aslan GhandForoush, DO

Chair, Peer Review Committee
Member at Large

Ralph Garcia-Pacheco, MD

Chair, Department of Medicine

Gian Yakoub, DO

Chair, Department of Pathology

Mohammed Molla, MD

Chair, Department of Psychiatry

Jeffrey Nalesnik, MD

Chair, Department of Surgery

Chou Yang, MD

Chair, Department of
Anesthesiology

Juan Lopez, MD

Chair, Department of Obstetrics &
Gynecology

Shakti Srivastava, MD

Chair, Department of Family
Medicine

Arman Froush, DO

Chair, Department of Radiology

Thiagarajan Nandhagopal, MD

Chief, Division of Pediatrics

TRAINING OF

The Central Valley of California is in desperate need of physicians, both primary care and specialists. Along with the Inland Empire, the San Joaquin Valley has the lowest number of practicing physicians; a startling statistic that is continuously outpaced by a growing population. Recent studies have shown that over 44% of all Californians have insufficient access to a primary care provider, and since the healthcare workforce is not evenly distributed across the state, this number is further amplified in Kern County. In our Community Health Needs Assessment, published in 2022, we identified that Kern County has nearly 65

providers for every 100,000 people. The rest of California has a ratio of approximately 100 providers for every 100,000 people.

Indeed, mid-range forecasts indicate that the state will need an additional 9,000 primary care physicians by 2030. Kern Medical, serving as the only academic teaching hospital in the County, is ready to meet these challenges and train the next generation of physicians.

For over 67 years, Kern Medical has trained many of our area's physicians, who chose to stay and practice in our community. We have seen tremendous growth in graduate medical education at our institution over the last two decades, with the introduction of a Psychiatry Residency Program in 2003 and its subsequent Child and



THE NEXT GENERATION PHYSICIANS



FROM THE DIRECTOR OF MEDICAL EDUCATION

AMIR BERJIS, MD, MACM, FACS, FCCP

Adolescent Psychiatry Fellowship Program in 2007. Most recently, we have added Simulation, Addiction Medicine, and Infectious Disease Fellowships. We continue to work collaboratively with Clinica Sierra Vista and its sponsored Family Medicine Residency Program to educate future primary care physicians. In the last decade, we have increased our trainee and faculty complements in all of our sponsored programs, including Emergency Medicine, Internal Medicine, Obstetrics and Gynecology, and Psychiatry, with over 30% of our graduates choosing to practice in the Central Valley. Our new General Surgery Residency Program starts next year. We continue to monitor gaps in specialty care in our area and deliberately strive to recruit and retain new physicians.

In collaboration with our medical school partners, including the David Geffen School of Medicine at UCLA and Western University of Health Sciences, we are developing pathways for local high school and college students to seek careers in the medical profession. These pathways will ensure that we train the next generation of physicians who are from Kern County, represent our patient population, and are willing to give back and serve our community upon completion of residency training.

Kern Medical proudly serves as our community's academic institution and tertiary referral center serving the most vulnerable patient population in our state.



Kern Medical added an Infectious Disease Fellowship in the 2021-2022 academic year. Carlos D'Assumpcao, MD, was the inaugural fellow for this program. He is a graduate of Ross University School of Medicine and a recent graduate of Kern Medical's Internal Medicine Residency Program.

After successfully completing the ID Fellowship, Dr. D'Assumpcao joined Kern Medical as a faculty physician in the Department of Medicine.



MEDICAL EDUCATION

07

Resident and Fellow Training Positions



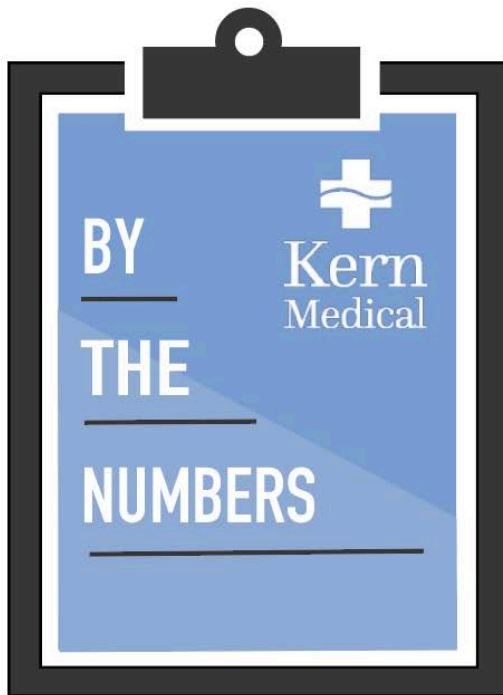
240+ Medical Students, Residents and Fellows



2024 Incoming Class of Residents and Fellows

FISCAL YEAR 2024

08



55,753



EMERGENCY
ROOM VISITS

2,530



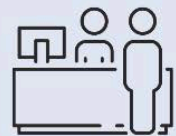
BIRTHS

5,903



SURGERIES

216,772



OUTPATIENT
CLINIC VISITS

2,400+



Our Staff

9,608



INPATIENT
ADMISSIONS

2,525



TRAUMA
ACTIVATIONS

We have come



New physician offices located at 9300 Stockdale Highway

Developed new minimally invasive robotic surgery program, including the da Vinci Xi robotic surgical system

Implemented advanced urologic services program

Received Primary Stroke designation, including the launch of a telemedicine stroke and neurological-interventional radiology services

July 1, 2016 - transfer of ownership and operations of Kern Medical to the Hospital Authority

Safe Sleep program to prevent Sudden Unexplained Infant Death Syndrome

Contracted with USC Neurosurgeons



Remodel and expansion of a Family Medicine clinic at Columbus Street Clinic

2C Inpatient Medical/Surgical Unit remodeled

Remodel and relocation of physician resident rounding rooms

Opening of Kern Medical Surgery Center, LLC

New hospital administration starts at Kern Medical

Opened Wound Care Clinic

Dedicated Hand Clinic

Reach and Grow Clinics for medically fragile and behavioral health patients needing outpatient medical care in the remodeled hospital campus clinic

Newly remodeled endovascular interventional radiology lab



2014

2015

2016

2017

2018

Expanded Truxtun Clinic location space and services

Remodel of several hospital departments, including the Emergency Department, Lecture Hall, A-Wing Clinic, waiting areas for ICU/DOU, Surgery, and OB/GYN

Expanded Birth Center's post-partum services with private rooms

Replacement of most major imaging equipment including CT, digital mammography, and x-ray unit in the Emergency Department

Valley Fever Institute founded

JJ's Legacy Comfort Room opened

Development of Simulation Lab for training of medical students, residents, and nurses

Relocation of Reach and Grow Clinics to new 34th Street Clinic to expand care

Safe Home Safe Baby program in conjunction with Bakersfield Firefighters Burn Foundation

Nitrous Oxide Pain Management Program launched for mothers in labor

Labor and Delivery Unit remodeled

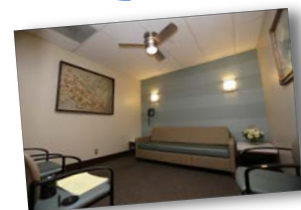
Medical Student Union Building opened

Celebrated 67 years of physician residency training programs

Launched Epilepsy Program with USC Epilepsy Consortium

Relocation and opening of Oncology Infusion Center of Columbus Street Clinic

Eye Institute opened



A LONG WAY...



Installation of Cerner electronic health record and revenue cycle system

Partner with Adventist Health to improve community wellness, advance training programs, and recruit physicians

Hospital cafeteria remodel

Launch Sickle Cell Program and Clinic

Commence Infectious Disease Fellowship for graduate medical education training

Launched the Behavioral Health Electroconvulsive Treatment Therapy program and clinic

Opened the Q Street Imaging Center with a specialty focus on Women's Health

End of COVID-19 Pandemic

Opening of new inpatient pediatric unit

Remodel of outpatient pediatric clinic at Columbus Street

Opening of Recuperative Care Center at City of Bakersfield's low barrier shelter for homeless patients discharged from area hospitals

Launched Kern Medical Teaching Kitchen

Opening of Addiction Medicine Clinic at the hospital campus

Q Street Clinic Opening with expanded specialty services including Fresh Fracture Clinic, orthopedics, cardiology, general surgery, neurosurgery, and pain management



2019

2020

2021

2022

2023



Valley Fever Institute and Infusion Services expansion and relocation to Columbus Street Clinic

COVID-19 Pandemic

Operationalized mobile isolation trailers for discharged patients with insecure housing - available for all hospitals in the Bakersfield area

Launched mobile COVID-19 vaccine clinics

Operate the State's exclusive Bakersfield COVID monoclonal antibody treatment center at Columbus Street Clinic

Medical clinic opening at City of Bakersfield's Low Barrier Shelter for homeless patients

Affiliation with Western University of Health Sciences to train 3rd and 4th year medical students

Increased Internal Medicine and Psychiatry physician residency slots

Expanded ENT, Head and Neck, and Plastic/Reconstructive surgery programs at new downtown location



2024

Fiscal Year

Where our income came from:

OPERATING REVENUES

Net Patient Service Revenue and Patient Care Funding	\$489,268,521
County Indigent Funding	3,422,997
Other Operating Revenue	58,723,920

Total Operating Revenue	\$551,415,438
--------------------------------	----------------------

Where it went:

OPERATING EXPENSES

Salaries and Employee Benefits	374,016,909
Services and Supplies	136,482,051
Other Expenses	24,405,051
Depreciation and Amortization	15,225,081

Total Operating Expenses	\$550,129,092
Operating Gain	\$1,286,346

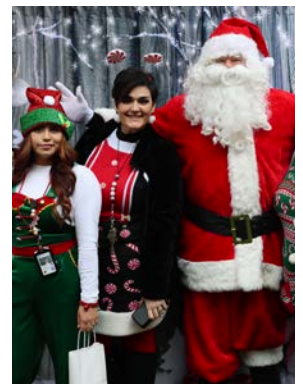


The best thing at Kern Medical: Our People

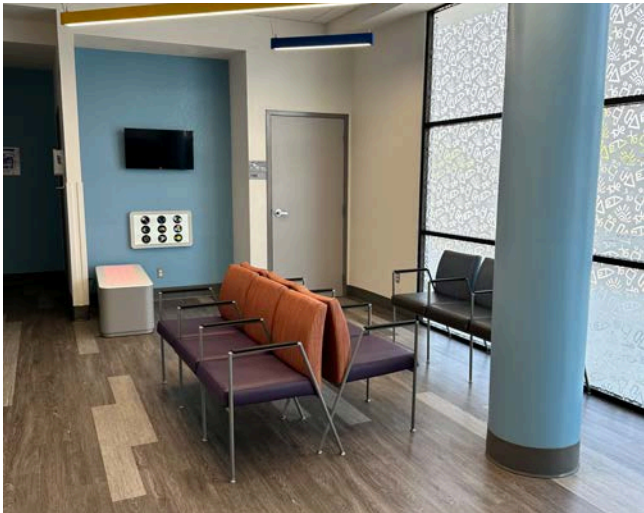
At Kern Medical, we firmly believe in the enduring value of maintaining a vibrant workplace culture, understanding that it is the heart of our organization. We actively foster inclusivity through engaging initiatives like Hospital Week and Nurses Week, where we dedicate a full week to giveaways and fun events to express gratitude for our dedicated team members. Our commitment extends to creating a joyful and collaborative atmosphere, evident in our annual Halloween costume and pumpkin carving contests that encourage creativity and camaraderie. During the festive season, we come together for holiday meals adorned with festive sweaters, reinforcing a sense of community and celebration. Committed to continual improvement, we are always exploring new ways to demonstrate appreciation for the hard work and dedication of our exceptional team members, ensuring that Kern Medical remains a place where everyone feels valued, supported, and inspired.

Staff Appreciation

At Kern Medical, inclusivity extends beyond our main campus to honor the invaluable contributions of our team members working at off-campus clinics and offices. Recognizing their dedication, especially during the holidays, we go the extra mile to ensure their participation and appreciation. As a heartfelt gesture, employees at remote locations receive hand-delivered hot meals during their shifts, bringing the warmth of the season directly to them. This thoughtful initiative not only acknowledges their hard work but also reinforces our commitment to creating a unified and supportive work culture across all our locations. At Kern Medical, every team member is an integral part of our family, and no distance diminishes the spirit of gratitude and celebration that defines our holiday festivities.



Recent updates...



COLUMBUS PEDIATRIC CLINIC



NON-STRESS TESTS OB CLINIC RELOCATION

We were delighted to celebrate the open house of our remodeled Outpatient Pediatrics Clinic, along with a new outpatient location for obstetric Non-Stress Tests (NSTs), at our Columbus facility. This milestone marks a significant advancement in our commitment to providing exceptional healthcare services to the community. Kern Medical received a \$9.2 million grant that has funded the new outpatient pediatric clinic as well as a new inpatient pediatric unit. The remainder of the grant funding will be used to build a dedicated pediatric ER and purchase other pediatric-related equipment.

In addition, we opened a new outpatient location for obstetric patients to receive Non-Stress Tests (NSTs) for high-risk pregnancies at the Columbus Clinic. This pivotal service is vital for monitoring the health and well-being of expectant mothers and their babies. Being able to provide NSTs at our Columbus Clinic will make these services much more accessible to local families.



4TH FLOOR PEDIATRICS GRAND OPENING

The new pediatrics unit, located on the 4th floor of the main campus hospital, offers state-of-the-art services for the children of the Kern County community and beyond. The new facility was made possible thanks to funding from the California Health Facilities Financing Authority.



Q STREET IMAGING CENTER GRAND OPENING

We are thrilled to have opened our Q Street Imaging Center in East Bakersfield. The new Imaging Center, located at 3551 Q Street, focuses on women's imaging services. The new facility houses state of the art equipment that can provide CT scans, Ultrasounds, Mammography, Bone Density, X-Ray services, and more.

VALLEY FEVER WALK

Kern Medical's Valley Fever Walk returned to a new location at California State University Bakersfield. The walk aims to raise money for the Valley Fever Institute's overall activities of patient care, public information and professional education.



ELECTRO-CONVULSIVE THERAPY PROGRAM INTRODUCED

Kern Medical became the area's only hospital to offer Electroconvulsive Therapy, or ECT. This service is primarily offered to patients experiencing extreme depression.

ADDICTION MEDICINE CLINIC

We unveiled the Addiction Medicine Clinic, including the Medication Assistance and Recovery Clinic, or MARC. We treat behavioral and substance addictions and tailor our plans to any age.



MOBILE CLINIC SERVICES

15

Kern Medical is expanding its partnerships with numerous Kern County schools and organizations to bring accessible healthcare to students, staff and the community.



What we offer:

- Wellness Visits
- Hearing Tests
- Vision Screenings
- School Physicals
- Point of Care Testing
- Lab Services (Blood Draws)
- Immunizations
- Health Benefit Advisors
- Same-day visits

Our mobile clinic services are supported by:



COMING SOON

Pediatrics Emergency Department



Construction is underway for Kern Medical's brand new, state-of-the-art Pediatrics Emergency Department, thanks to a grant from California Health Facilities Financing Authority.

What We Do

Kern Medical Foundation is proud to partner with our community and government agencies to secure funds and resources necessary to support Kern Medical's life-changing and life-saving programs. By raising additional financial support, the Foundation is able to secure funds for patient services, facilities, equipment, medical education and research.

Who We Are

Kern Medical Foundation is a not-for-profit corporation as provided under section 501(c)(3) of the Internal Revenue Code. Contributions are tax deductible in accordance with state and federal regulations.

Our Impact



- Pediatric Emergency Room
- Medical Education
- Outpatient pediatric patient programs
- Oncology Navigation
- Valley Fever Institute
- Support for Sickle Cell patients
- Oncology & Infusion services
- Medication Assistance and Recovery Clinic
- Social Services
- Labor & Delivery fetal monitoring
- Palliative Care
- Cardiopulmonary services (EEG)
- Physician Training
- Simulation Center



Kern Medical

Health for Life.



661-326-2000



kernmedical.com

CHECK IT OUT



Scan this QR code to view our recent commercial highlighting Kern Medical's incredible turnaround.



Featuring our very own physicians, nurses, staff and patients.